

Specifications (English units)

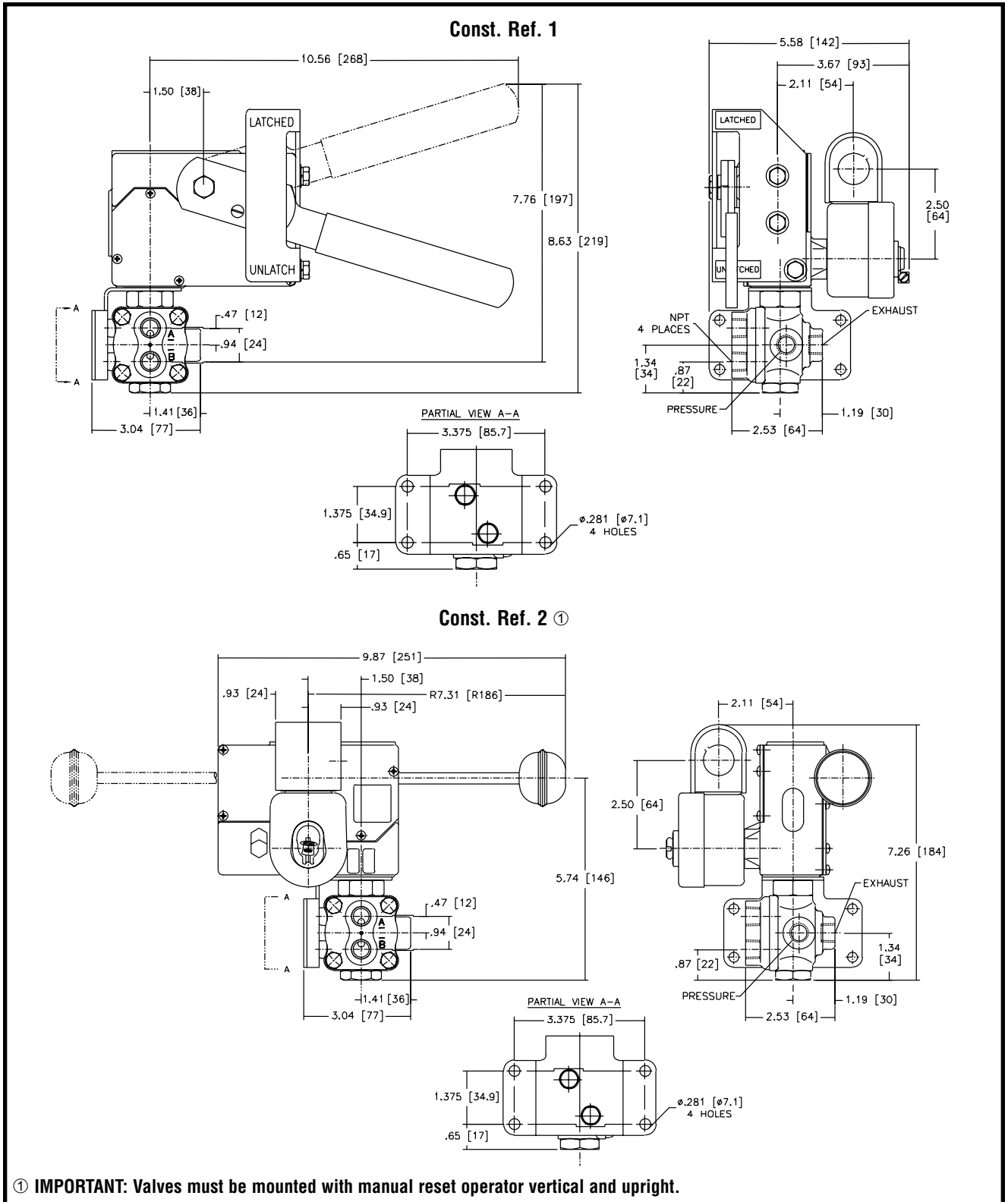
Pipe Size (ins.)	Orifice Size (ins.)	Cv Flow Factor	Operating Pressure Differential (psi)			Max. Fluid Temp. °F		No Voltage Release Catalog Number	Electrically Tripped Catalog Number	Const. Ref.	Watt Rating/ Class of Coil Insulation	
			Min.	Max. AC	Max. DC	AC	DC				AC	DC
BRASS BODY with PTFE + FKM Seats and Discs for Air and Inert Gas												
1/4	3/16	.70	0	250	250	160	160	8408B006	8410B006	1	20/F	36.2/H
3/8	3/16	.70	0	250	250	160	160	8408B007	8410B007	1	20/F	36.2/H
BRASS BODY with NBR Seats and Discs (CA Pilot Cartridge) for Air, Inert Gas, Water, and Light Oil. This group of valves meets shock and vibration ISA S71.03C2.												
1/2	3/8	2.2	10	250	250	200	200	8408A008 ①	8410A008 ①	4	20/F	36.2/H
3/4	3/4	5.6	10	250	250	200	200	8408A009 ①	8410A009 ①	3	20/F	36.2/H
1	3/4	5.6	10	250	250	200	200	8408A010 ①	8410A010 ①	3	20/F	36.2/H
BRASS BODY with PTFE + FKM Seats and Discs for Air								Free Handle Construction				
1/4	3/16	.70	0	125	125	160	160	8047A001		2	20/F	36.2/H
3/8	3/16	.70	0	125	125	160	160	8047A002		2	20/F	36.2/H
① A Minimum Operating Pressure Differential must be maintained between the pressure and exhaust ports. Supply and exhaust piping must be full area, unrestricted. ASCO flow controls and other similar components must be installed in the cylinder lines only.												

Specifications (Metric units)

Pipe Size (ins.)	Orifice Size (mm)	Kv Flow Factor (m3/h)	Operating Pressure Differential (bar)			Max. Fluid Temp. °C		No Voltage Release Catalog Number	Electrically Tripped Catalog Number	Const. Ref.	Watt Rating/ Class of Coil Insulation	
			Min.	Max. AC	Max. DC	AC	DC				AC	DC
BRASS BODY with PTFE + FKM Seats and Discs for Air and Inert Gas												
1/4	5	.60	0	17	17	71	71	8408B006	8410B006	1	20/F	36.2/H
3/8	5	.60	0	17	17	71	71	8408B007	8410B007	1	20/F	36.2/H
BRASS BODY with NBR Seats and Discs (CA Pilot Cartridge) for Air, Inert Gas, Water, and Light Oil. This group of valves meets shock and vibration ISA S71.03C2.												
1/2	10	1.89	0.7	17	17	93	93	8408A008 ①	8410A008 ①	4	20/F	36.2/H
3/4	19	4.80	0.7	17	17	93	93	8408A009 ①	8410A009 ①	3	20/F	36.2/H
1	19	4.80	0.7	17	17	93	93	8408A010 ①	8410A010 ①	3	20/F	36.2/H
BRASS BODY with PTFE + FKM Seats and Discs for Air								Free Handle Construction				
1/4	5	.60	0	9	9	71	71	8047A001		2	20/F	36.2/H
3/8	5	.60	0	9	9	71	71	8047A002		2	20/F	36.2/H
① A Minimum Operating Pressure Differential must be maintained between the pressure and exhaust ports. Supply and exhaust piping must be full area, unrestricted. ASCO flow controls and other similar components must be installed in the cylinder lines only.												

SPECIAL SERVICE PILOT

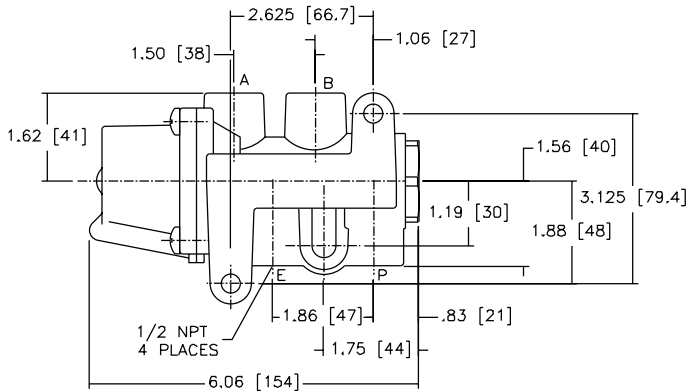
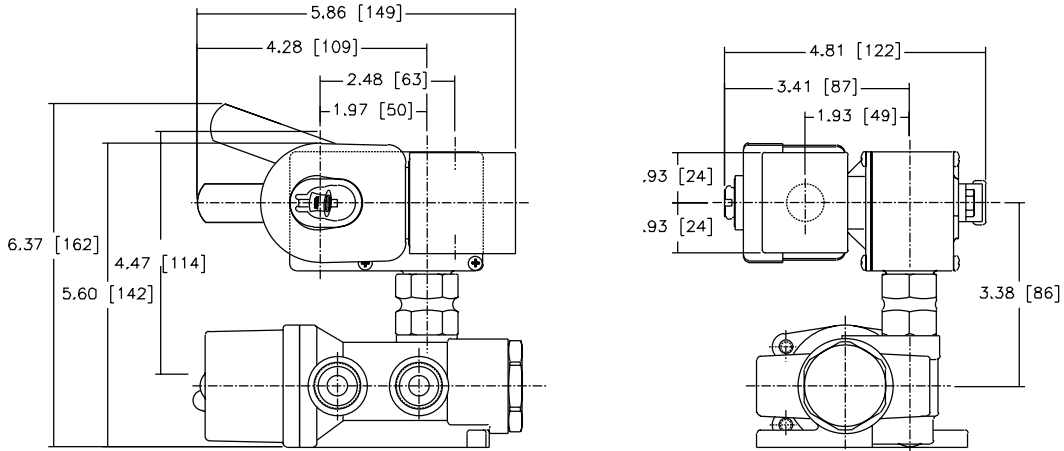
Dimensions inches (mm)



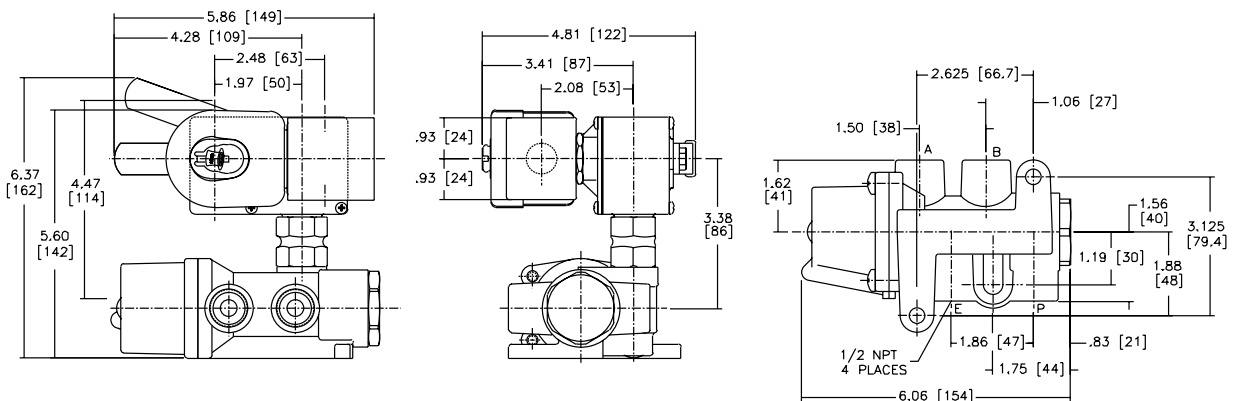
SPECIAL SERVICE PILOT

Dimensions inches (mm)

Const. Ref. 3
No Voltage Release



Const. Ref. 4
Electrically Tripped



SPECIAL SERVICE
PILOT