

Features

- Eliminates welding in through-the-wall installations
- Normally used with ASCO pulse valves having integral Dresser® fittings
- Top loading-type dust collectors require installation and removal of collector bags or cartridges from the top of the housing, above the blow tubes
- Bottom loading types require installation and removal of bags or cartridges for the bottom from the housing, below the blow tubes

Installation

Fittings are installed through the dust collector wall, gasketed in place, and secured with a retaining ring. Compression nut, retainer, and pipe seal are then installed on the pipe, making certain the beveled edge of the seal faces the connector body. The pipe assembly then slides into the connector body and the nut is firmly hand tightened.



Nominal Ambient Temp. Ranges

0°F to 185°F (-18°C to 85°C)

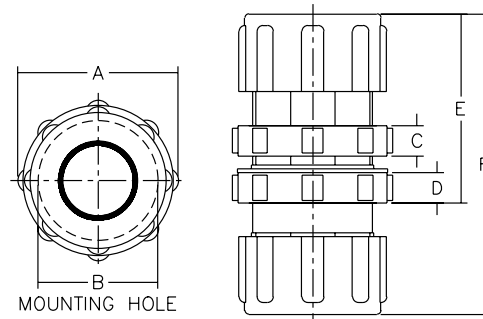
For higher temps. 300°F (149°C), specify suffix "V"

Note: The rubber seal, retainer, and nut provide pressure sealing around the pipes. Inlet and blow pipes must be secured to prevent movement.

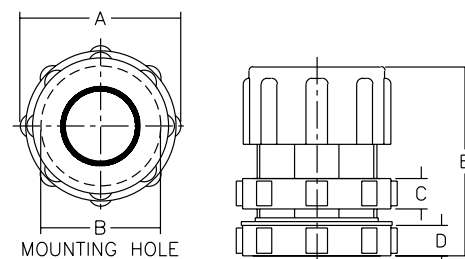
Dimensions inches (mm)

Connector Size		3/4"	1"	1-1/2"
A	ins.	2.52	3.04	3.92
	mm	64.01	77.22	99.57
B	ins.	1.92	2.20	2.92
	mm	48.77	55.88	74.17
C	ins.	0.48	0.48	0.60
	mm	12.19	12.19	15.24
D	ins.	0.48	0.48	0.60
	mm	12.19	12.19	15.24
E	ins.	2.92	2.88	3.68
	mm	74.17	73.15	93.47
F	ins.	4.64	4.72	5.76
	mm	117.86	119.89	146.30
Top Loading Kit Number	Pipe Size (ins.)	Bottom Loading Kit Number		
266015	3/4	266014		
266017	1	266016		
266019	1-1/2	266018		

TOP LOADING



BOTTOM LOADING



SPECIAL SERVICE VALVES

