

4-Way Features

- Four-way, four port (4/2) and five port (5/2) Next Generation solenoid valves have one pressure port, 2 cylinder ports, and either 1 or 2 exhaust ports
- Control of air, water, light oil, and non-corrosive media
- Single solenoid operation (pressure and exhaust ports and cylinder ports alternate connection based on solenoid operation)
- Pipe sizes – 1/4 to 1 inch

4-Way Specifications (English units)

| Pipe Size (ins.) | Orifice Dia. (ins.) | Cv Flow | | Operating Pressure Differential (psi) | | | | Max. Fluid Temp. °F | Brass | Const. Ref. | Agency UL | Stainless Steel | Const. Ref. | Agency UL | Wattage AC/DC | Approx. Shipping Weight (lbs.) |
|---|---------------------|----------|---------|---------------------------------------|---------------|-------|---------------------|---------------------|-------------|-------------|-----------|-----------------|-------------|-----------|---------------|--------------------------------|
| | | | | Max. AC/DC | | | | | | | | | | | | |
| | | Pressure | Exhaust | Min. | Air-Inert Gas | Water | Light Oil @ 300 SSU | | | | | | | | | |
| General Service - Single Solenoid | | | | | | | | | | | | | | | | |
| 1/4 | 1/16 ② | 0.09 | 0.09 | 10 | 150 | 150 | 150 ③ | 180 | 8345P001 | 2 | ● | - | - | - | 2 | 4.8 |
| 1/4 | 1/4 | 0.8 | 1.0 | 10 ① | 250 | 250 | 250 | 180 | 8344P070 | 1 | ● | - | - | - | 2 | 5.2 |
| 3/8 | 3/8 | 1.4 | 2.2 | 10 ① | 250 | 250 | 250 | 180 | 8344P072 | 3 | ● | - | - | - | 2 | 9.6 |
| 1/2 | 3/8 | 1.4 | 2.2 | 10 ① | 250 | 250 | 250 | 180 | 8344P074 | 3 | ● | - | - | - | 2 | 9.6 |
| 3/4 | 3/4 | 5.2 | 5.6 | 10 ① | 250 | 250 | 250 | 180 | 8344P076 | 4 | ● | - | - | - | 2 | 18.6 |
| 1 | 3/4 | 5.2 | 5.6 | 10 ① | 250 | 250 | 250 | 180 | 8344P078 | 4 | ● | - | - | - | 2 | 18.6 |
| General Service - 4/2 Dual Solenoid | | | | | | | | | | | | | | | | |
| 3/8 | 3/8 | 1.4 | 2.2 | ① | 300 | 300 | 200 | 180 | 8344P080 | 5 | ● | - | - | - | 2 | 10.8 |
| NAMUR Mount - 3/2, 5/2 Single Solenoid | | | | | | | | | | | | | | | | |
| 1/4 | 1/4 | 0.86 | 0.86 | 30 | 150 | - | - | 180 | EE8551P401* | 6 | ● | EE8551P409 | 6 | ● | 2 | 4 |

● = General Purpose Valve. ① 25 psi minimum for light oils; ② 3/32" exhaust orifice. * Aluminum body. ③ Viscosity 50 SSU max.

4-Way Specifications (Metric units)

| Pipe Size (ins.) | Orifice Dia. (mm) | Kv Flow | | Operating Pressure Differential (bar) | | | | Max. Fluid Temp. °C | Brass | Const. Ref. | Agency UL | Stainless Steel | Const. Ref. | Agency UL | Wattage AC/DC | Approx. Shipping Weight (kgs.) |
|---|-------------------|----------|---------|---------------------------------------|---------------|-------|---------------------|---------------------|-------------|-------------|-----------|-----------------|-------------|-----------|---------------|--------------------------------|
| | | | | Max. AC/DC | | | | | | | | | | | | |
| | | Pressure | Exhaust | Min. | Air-Inert Gas | Water | Light Oil @ 300 SSU | | | | | | | | | |
| General Service - Single Solenoid | | | | | | | | | | | | | | | | |
| 1/4 | 1.5 ② | 0.07 | 0.07 | 0.7 | 10 | 10 | 10 ③ | 82 | 8345P001 | 2 | ● | - | - | - | 2 | 2.2 |
| 1/4 | 6.3 | 0.7 | 0.86 | 0.7 ① | 17 | 17 | 17 | 82 | 8344P070 | 1 | ● | - | - | - | 2 | 2.4 |
| 3/8 | 9.5 | 1.2 | 2 | 0.7 ① | 17 | 17 | 17 | 82 | 8344P072 | 3 | ● | - | - | - | 2 | 4.4 |
| 1/2 | 9.5 | 1.2 | 2 | 0.7 ① | 17 | 17 | 17 | 82 | 8344P074 | 3 | ● | - | - | - | 2 | 4.4 |
| 3/4 | 19 | 4.5 | 4.8 | 0.7 ① | 17 | 17 | 17 | 82 | 8344P076 | 4 | ● | - | - | - | 2 | 8.5 |
| 1 | 19 | 4.5 | 4.8 | 0.7 ① | 17 | 17 | 17 | 82 | 8344P078 | 4 | ● | - | - | - | 2 | 8.5 |
| General Service - 4/2 Dual Solenoid | | | | | | | | | | | | | | | | |
| 3/8 | 9.5 | 1.2 | 1.9 | ① | 21 | 21 | 14 | 82 | 8344P080 | 5 | ● | - | - | - | 2 | 4.9 |
| NAMUR Mount - 3/2, 5/2 Single Solenoid | | | | | | | | | | | | | | | | |
| 1/4 | 6.3 | 0.74 | 0.74 | 2.1 | 10.3 | - | - | 82 | EE8551P401* | 6 | ● | EE8551P409 | 6 | ● | 2 | 1.8 |

● = General Purpose Valve. ① 1.7 bar minimum for light oils; ② 2.4 mm exhaust orifice. * Aluminum body. ③ Viscosity 50 SSU max.

Important

A Minimum Operating Pressure Differential must be maintained between the pressure and exhaust ports. Supply and exhaust piping must be full area, unrestricted. ASCO flow controls and other similar components must be installed in the cylinder lines only.

Refer to Engineering Section for details.

4-Way Optional Features Chart

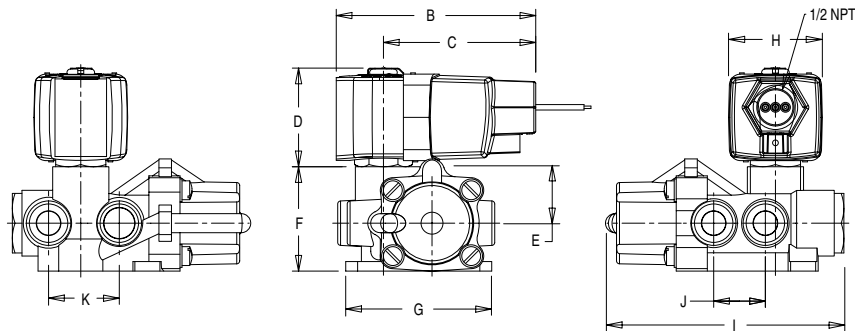
| Pipe Size (ins.) | Orifice Dia. (ins.) | Base Catalog Number | | Resilient Materials | | | | | | | | | Other | | Standard Rebuild Kit |
|------------------|---------------------|---------------------|-----------------|---------------------|-----|------|----------|----------------|------|----------|--------|-----------------|------------------|-------------|----------------------|
| | | Brass | Stainless Steel | NBR | FKM | EPDM | Neoprene | Oxygen Service | PTFE | Urethane | Vacuum | Manual Operator | Mounting Bracket | Brass AC/DC | |
| 1/4 | 1/16 | 8345P001 | - | ● | V | - | - | - | - | - | - | - | MO | - | 322925 |
| 1/4 | 1/4 | EE8551P401* | EE8551P409 | ● | - | - | - | - | - | - | - | - | MH/MS | - | - |
| 1/4 | 1/4 | 8344P070 | - | ● | V | - | - | - | - | - | - | - | MO | - | 322696 |
| 3/4 | 3/4 | 8344P080 | - | ● | V | - | - | - | - | - | - | - | MO | - | 322700 |
| 3/8 | 3/8 | 8344P072 | - | ● | V | - | - | - | - | - | - | - | MO | - | 322697 |
| 1/2 | 3/8 | 8344P074 | - | ● | V | - | - | - | - | - | - | - | MO | - | 322697 |
| 3/4 | 3/4 | 8344P076 | - | ● | V | - | - | - | - | - | - | - | MO | - | 322698 |
| 1 | 3/4 | 8344P078 | - | ● | V | - | - | - | - | - | - | - | MO | - | 322698 |

● = Standard. * Aluminum body.

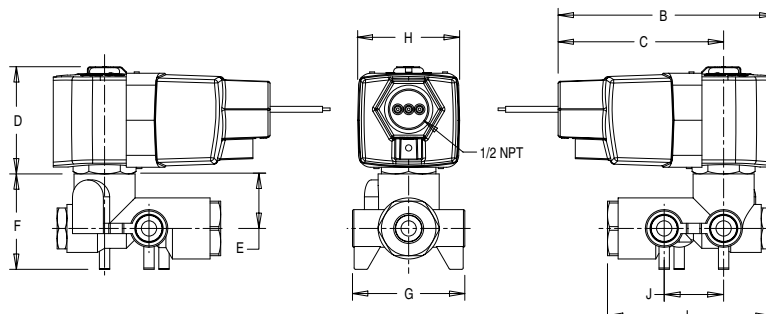
Dimensions: inches (mm)

| Const. Ref. | | B | C | D | E | F | G | H | I | J | K | Exhaust Pipe Size |
|-------------|------|--------|-------|-------|-------|-------|--------|-------|--------|-------|--------|-------------------|
| 1 | ins. | 4.00 | 3.04 | 1.97 | 1.12 | 2.08 | 2.94 | 1.87 | 4.82 | 1.03 | 1.41 | 3/8 |
| | mm | 101.60 | 77.22 | 50.04 | 28.45 | 52.83 | 74.68 | 47.50 | 122.43 | 26.16 | 112.01 | |
| 2 | ins. | 4.00 | 3.04 | 2.09 | 1.00 | 1.75 | 2.06 | 1.87 | 3.00 | 1.09 | - | 1/4 |
| | mm | 101.60 | 77.22 | 53.09 | 25.40 | 44.45 | 52.32 | 35.23 | 76.20 | 27.69 | - | |
| 3 | ins. | 4.00 | 3.04 | 1.97 | 0.94 | 2.06 | 3.18 | 1.87 | 6.05 | 1.50 | 1.86 | 1/2 |
| | mm | 101.60 | 77.22 | 50.04 | 23.88 | 52.32 | 80.77 | 47.50 | 153.67 | 38.10 | 47.24 | |
| 4 | ins. | 4.00 | 3.04 | 1.97 | 1.31 | 2.86 | 4.12 | 1.87 | 8.25 | 2.10 | 2.12 | 1 |
| | mm | 101.60 | 77.22 | 50.04 | 33.27 | 72.64 | 104.65 | 47.50 | 209.55 | 53.34 | 53.85 | |

Const. Ref. 1

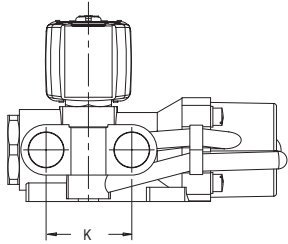


Const. Ref. 2

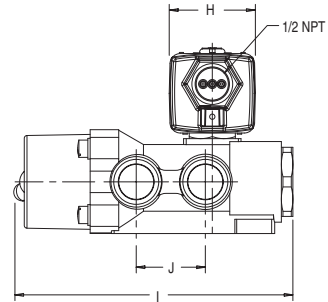
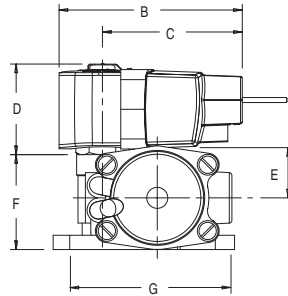


ELECTRONICALLY
ENHANCED

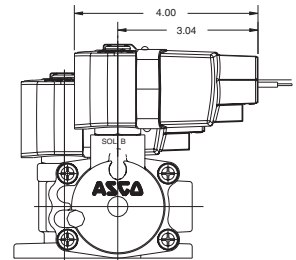
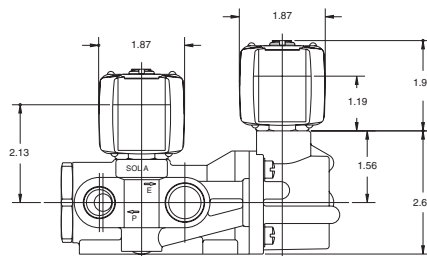
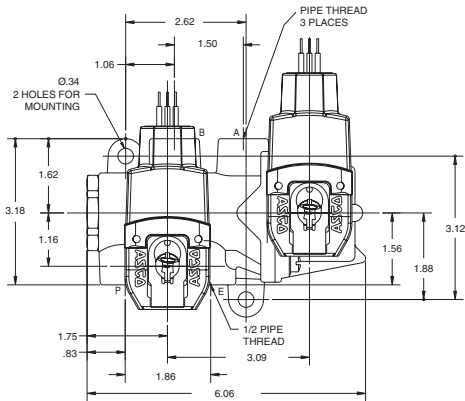
Dimensions: inches (mm)



Const. Ref. 3, 4

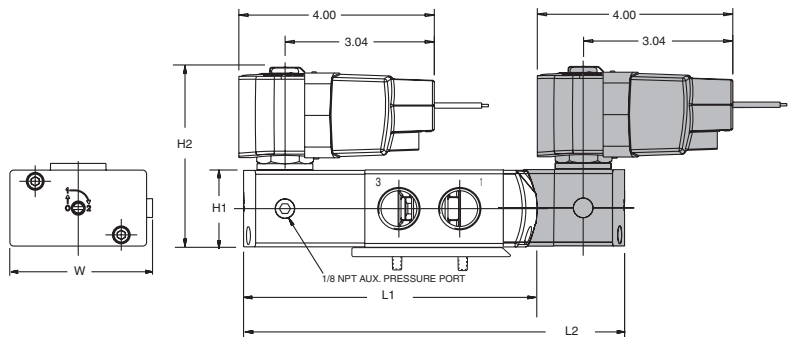


Const. Ref. 5

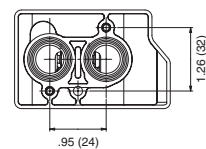


| | |
|---------------|-------------|
| Series | 8551 |
| NPT | 1/4 |
| L1 | 4.96 (126) |
| L2 | 6.50 (165) |
| H2 | 3.97 (101) |
| H1 | 1.57 (40) |
| W | 1.77 (45) |

Const. Ref. 6



8551 NAMUR FOOTPRINT



| Optional Manual Operators | | |
|----------------------------------|--|---|
| Add Suffix | | Description |
| MO | | Push and turn to lock with flat head screwdriver slot |
| MI | | Momentary push in with flat head screwdriver slot |
| MH | | Momentary push in by hand |
| MS | | Push and turn to lock by hand |

**ELECTRONICALLY
 ENHANCED**