

The Series 368/364 are 2-way and 3-way isolation valves constructed with TFE materials, which makes them virtually impervious to chemical attack. The Series 368 is a compact construction with a 0.062" orifice to handle standard flow requirements while the Series 364 is a high flow construction with a 0.093" orifice to handle higher flow requirements.

- PTFE diaphragm shields the internal components of the solenoid from the media to handle the most aggressive fluids
- Compact size saves valuable space in equipment
- Low power consumption

Construction

Valve Parts in Contact with Fluids	
Body	ETFE, PTFE
Poppet	PTFE
Diaphragm	PTFE

Electrical

Standard Voltages	12, 24 VDC+ 10%, -5% 115 VAC (with rectifier in lead wires)
Power Consumption	4.5 - 6.8 Watts 12 watts (Model 364)
Duty Cycle Rating	Continuous (Intermittent for latching version)
Coil Insulation	356°F (180°C)
Electrical Connection	22 gage lead wire

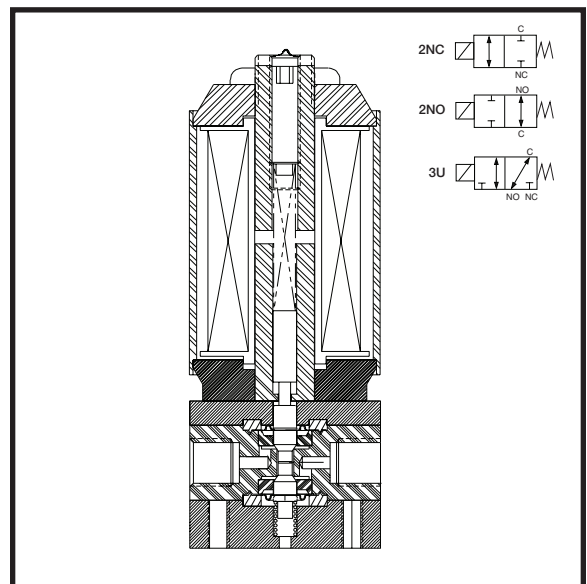
Valve

Response Time	10 to 20 ms at rated voltage
Internal Volume	368 • 30 µL from seat to port • 10 µL between poppets
Vacuum Rating	29" Hg

Alternative Constructions

Many alternative constructions are available and include a variety of voltages, electrical connectors, and materials of construction. ASCO Scientific can also custom design a valve for your specific application.

Contact your local ASCO sales office for more information.



Temperature Range:

Ambient & Media:
32°F to 77°F (0°C to 25°C) continuous duty
up to 104°F (40°C) intermittent duty

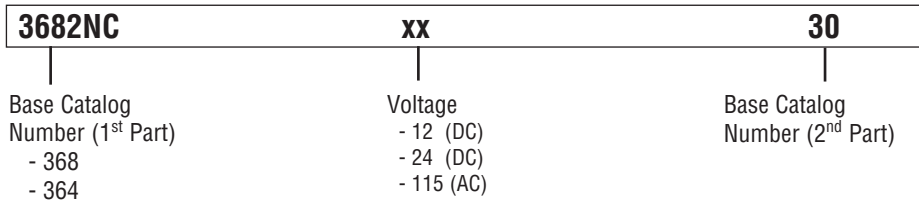
Approvals:

Meets applicable CE directives

Specifications (English Units)

Ports	Orifice Size (ins.)	Cv Flow Factor	Maximum Pressure (psi)	Catalog Number	Watt Rating @ 20°C	Weight (oz.)
2-WAY NORMALLY CLOSED (Closed when de-energized)						
1/4 - 28 UNF Flat Bottom	0.062	0.03	30*	3682NCxx30	4.5 (12VDC), 5.3 (24VDC), 6.8 (115/50-60 VAC)	4
1/8 NPT	0.093	0.08	30*	3643NCxx30	12 Watts	14
1/4 NPT	0.093	0.08	30*	3644NCxx30	12 Watts	14
2-WAY NORMALLY OPEN (Open when de-energized)						
1/4 - 28 UNF Flat Bottom	0.062	0.03	30*	3682NOxx30	4.5 (12VDC), 5.3 (24VDC), 6.8 (115/50-60 VAC)	4
1/8 NPT	0.093	0.08	30*	3643NOxx30	12 Watts	14
1/4 NPT	0.093	0.08	30*	3644NOxx30	12 Watts	14
3-WAY UNIVERSAL OPERATION (Pressure at any Port)						
1/4 - 28 UNF Flat Bottom	0.062	0.03	30*	36823xx30	4.5 (12VDC), 5.3 (24VDC), 6.8 (115/50-60 VAC)	4
1/8 NPT	0.093	0.08	30*	36433xx30	12 Watts	14
1/4 NPT	0.093	0.08	30*	36443xx30	12 Watts	14
Notes						
"xx" Denotes place in catalog number for voltage, three characters may be used when required						
* Common port: vacuum to 30 psig • NC + NO Ports: Vacuum to 10 psig						

Catalog Number Description and Options



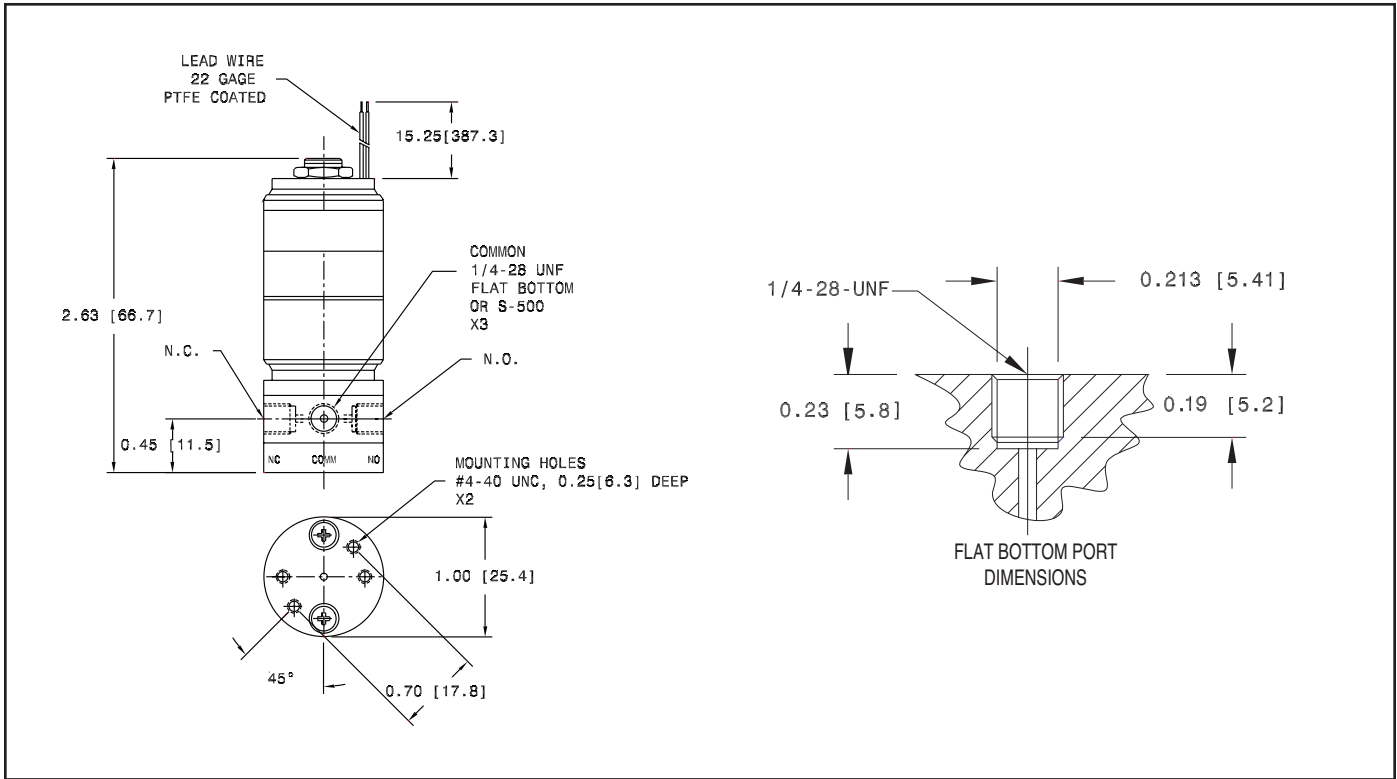
To Construct Catalog Number

- Select base catalog number
- Insert voltage into the 7th and 8th digits denoted by "xx"

Examples

- 3682NC1230 = 2-way normally closed valve with a 0.062" orifice, 1/4 - 28 UNF, flat bottom ports and 12 VDC coil rated at 4.5 Watts
- 3682311530 = 3-way valve with a 0.062" orifice, 1/4 - 28 UNF, Flat bottom ports and 115/50-60 VAC coil rectifier
- 364 3NO2430 = 2-way normally open valves with a 0.093" orifice, 1/8" NPT ports and 24 VDC coil rated at 12 Watts

Dimensions Series 368: Inches (mm)



Dimensions Series 364: Inches (mm)

